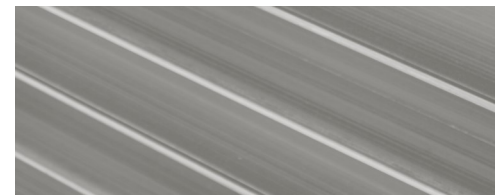
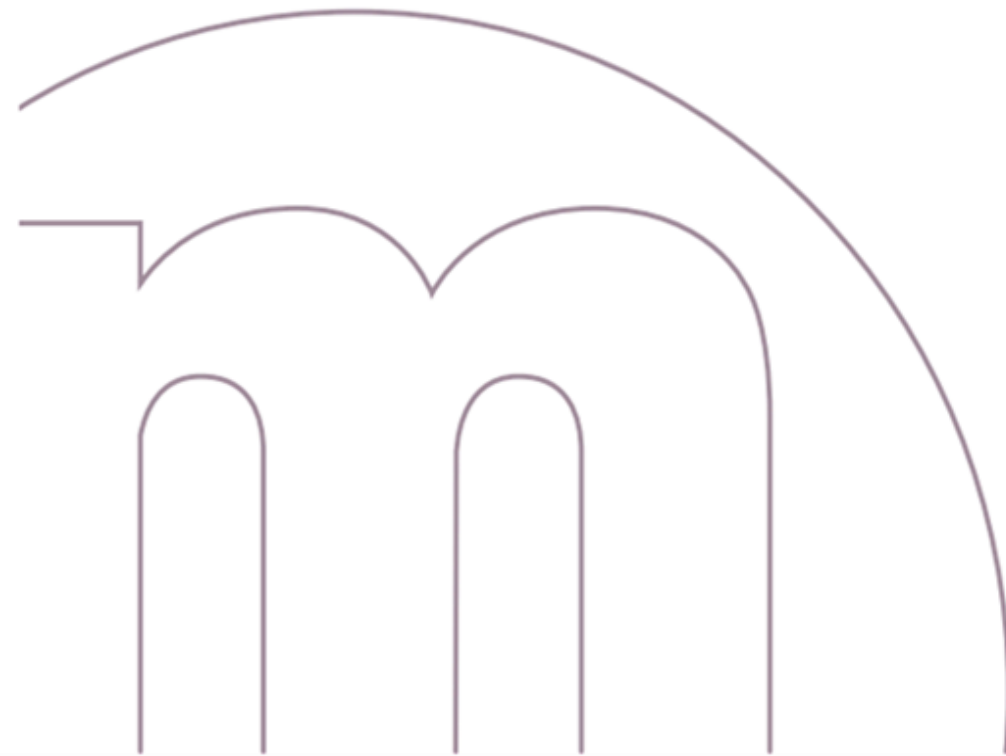
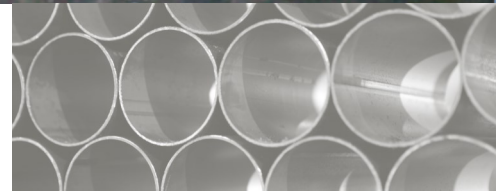
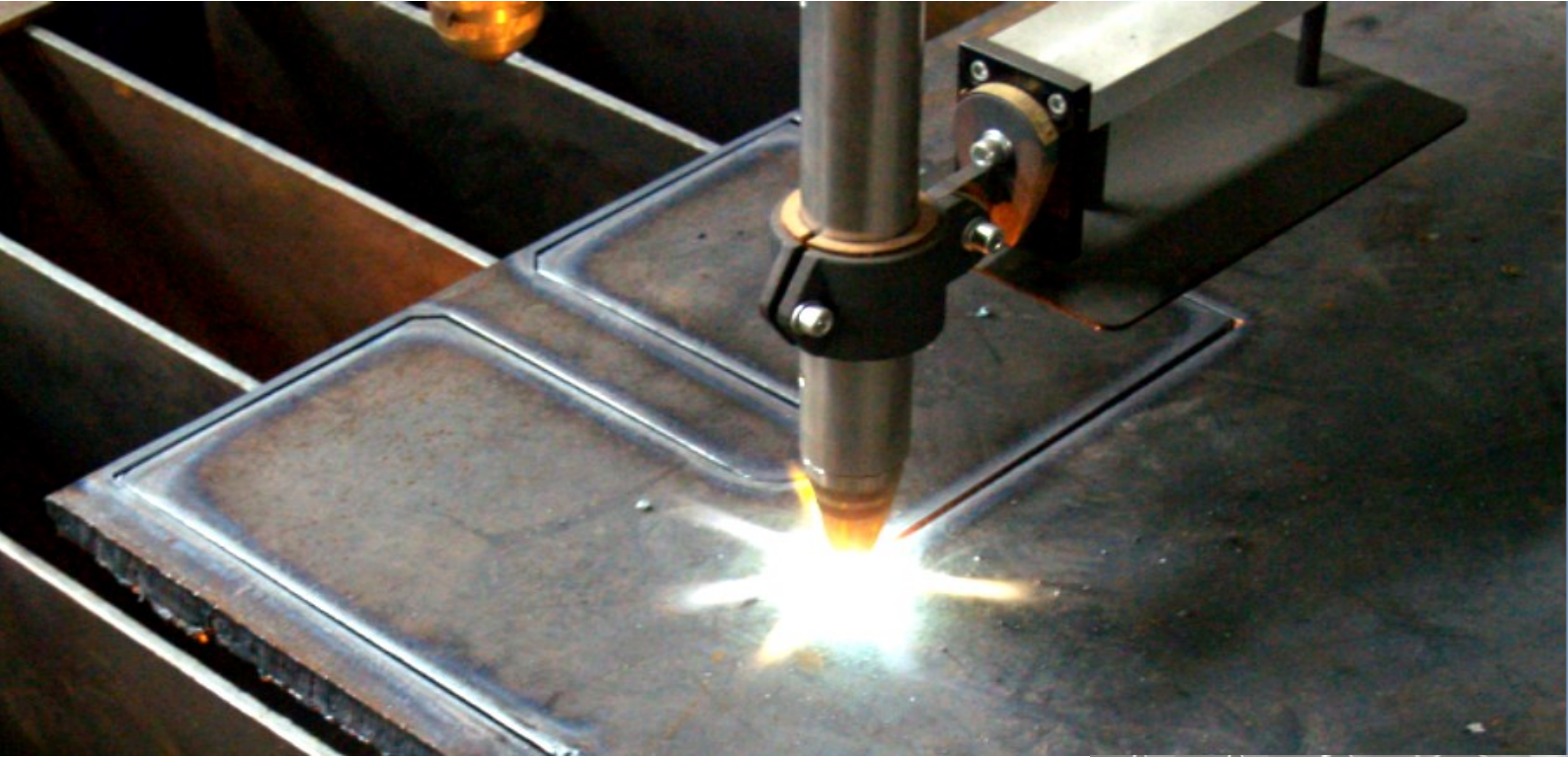
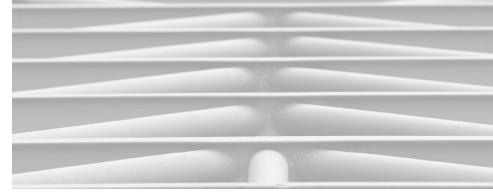




Marti EPC Ltd.
Engineering Production Construction

Manufacturing Service



Steel Work



Proficiency and Consistency

are the MAX factors to us when it comes to manufacturing the designed and desired products. More importantly, these are two fundamental elements to our very cost-effective OEM manufacturing solutions to customers.

Marti EPC facility is fully Swiss-managed. We implement stringent quality controls in every process of our business, particularly in our manufacturing. Our well-trained operators have been working with sheet steel and sheet metal for years.

We are equipped to manufacture products for use in:

- Structural steel constructions:
 - Steel Structures
 - Architectural steel construction
 - Roofing and wall cladding
 - Sheet metal forming
- Processing plant manufacturing:
 - Feeding hoppers
 - Silos
 - Plant and engine constructions

Metal Frame Work



A manufacturing assignment requires not just the manufacturing processes, it also demands feasibility study and analysis before processing.

We offer our expertise in working with sheet metal and metal to customers so that the outcomes are in full compliance with set standard.

Manufacturing to customer specification

This service offers our full manufacturing capability to customer standard and exact specifications of finished products in your own brand name.

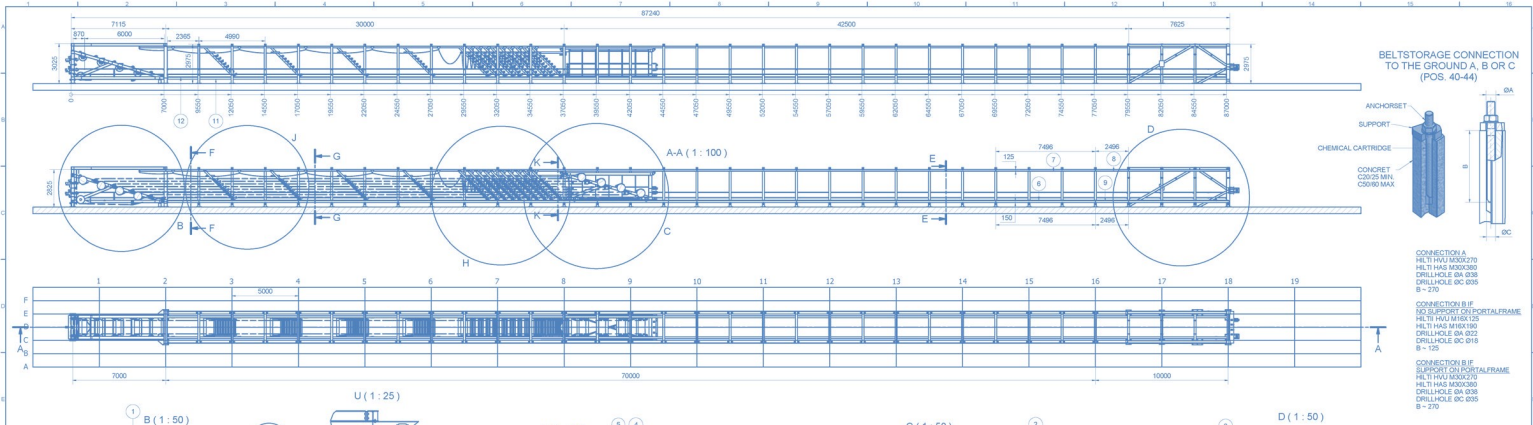
We provide detailed manufacturing plan and work closely with customer on product delivery schedule to best accommodate customer's product marketing plan.

Manufacturing to Co-developed specification

This service is comprised of the manufacturing and the product development expertise from Marti Engineering team. Before manufacturing, we offer to work with customers to optimize a product specification so that the ultimate goals of customer's are achieved.



From Drawing to Reality

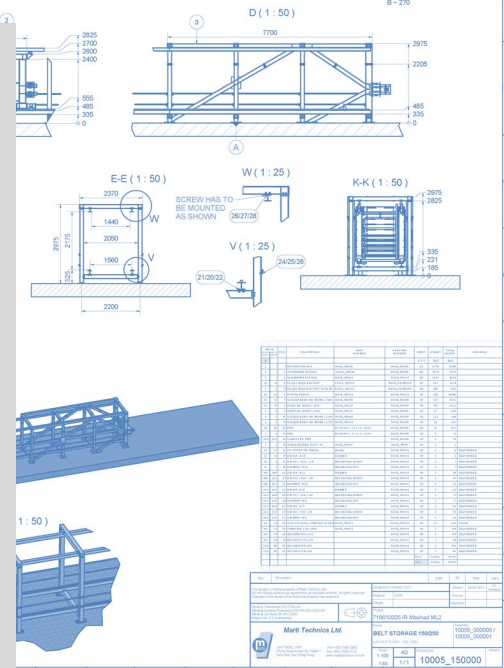


Made for reliability and sustainability

With our proven success in conveying and construction industry, our steel and metal products are constantly tested to all weather. Such tests are the best proof of our production quality.

From relatively simple sheet metal items to some of the most sophisticated steel structures that are installed in the harshest geographical condition, we build either from scratch or from sketches from customers.

Additionally, we provide assistance in correct installation of the corresponding products on site to ensure that every parts are in line with the construction plan.





Cost effectiveness

Cost effectiveness is interpreted through products manufactured by skillful personnel to the set standard and specification, also through products that are:

- Delivered on time.
- Made with optimally-sourced material

As a tradition of Swiss management, we are structured and accustomed to be punctual on our delivery. However, we also understand in full depth Asia's dynamics in the market place, therefore, we are capable of coping with changes with customer's needs.

With our intensive presence in Asia and years of sourcing experience from Asia, we have built our own resource database and supply chain management system to source our supplies effectively to get the best value of what they are paid for.

We also welcome manufacturing with material supplied by customer to customer's product specification.

Talk to us.

Equipment Manufactured.



Contact us at:

Marti Technics Ltd.

Unit 1809C, 18/F

China Hong Kong City Tower 1

33 Canton Road, Tsim Sha Tsui, Kowloon, Hong Kong

Tel: + 852 3590 2862 Fax: +852 3590 2132

www.martitechnics.com.hk

Marti Technik AG

Singapore Branch Office

#01-08 Sultan-Link, 59 Mohd Sultan Road

Singapore 238999

Tel: +65 6933 5883

www.martitechnik.ch

Marti EPC Ltd.

139 Xiangmang XiLu, Qingxi Town,

Dongguan City, 523658

Guangdong Province, P.R. China

Tel: +86 769 8730 0230 Fax: +86 769 8730 0018

www.marti-epc.com.cn

